



TONIK[®]

2020 Pricer

Outstanding Design in Outdoor Furniture

At Tonik[®], we design durable, American-made furniture that pushes boundaries, connects people and sets the scene for life's best moments.

BIKINI™ LOUNGER

BIKINI™ Lounger



Model #

 **BL70-10**

Weight

45lbs

Dimensions

36"H x 70"D x 28"W

List Price

\$1,198

Illuminated*

N/A

Options

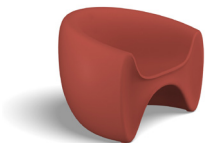
LUX Color +\$120

Upholstery

N/A

GOBY™ COLLECTION

GOBY™ Lounge



 **G10**

45lbs

29"H x 31"D x 44"W

\$1,095

+\$220

Anchor Kit +\$220
Two-Tone Color +\$200

PAD
A \$150 | B \$200 | C \$250 |
D \$300 | E \$350 | F \$400 |
COM \$100

FULL CUSHION
A \$700 | B \$900 | C \$1,100 |
D \$1,300 | E \$1,500 | F \$1,700
| COM \$500

GOBY™ Love Seat



 **G20**

57lbs

29"H x 31"D x 76"W

\$1,598

+\$440

Anchor Kit +\$220
Two-Tone Color +\$300

PAD
A \$300 | B \$375 | C \$450 |
D \$525 | E \$600 | F \$675 |
COM \$225

FULL CUSHION
A \$1,050 | B \$1,300 |
C \$1,550 | D \$1,800 |
E \$2,050 | F \$2,300 |
COM \$800

GOBY™ Coffee Table



 **G50**

28lbs

15"H x 26"D x 43"W

\$944

+\$440

Anchor Kit +\$220
Two-Tone Color +\$350

N/A

HUEY™ SEATING

HUEY™



HY16

48lbs

40"H x 40"D x 25"W

\$1,244

+\$220

Tether +\$110

N/A



HY18

51lbs

44"H x 45"D x 27"W

\$1,244

+\$220


Tether +\$110

N/A

TONIK™

Price List
2020

Tonik | 1800 W. Hawthorne Lane, Suite N | West Chicago, IL 60185 | sales@tonikworld.com | 844.TONIK45 (Toll Free) | tonikworld.com
Specifications subject to change without notice. | 4/20 | ©2020 Tonik | All Rights Reserved.

 Item has a Ballast Port

* Illuminated products come in Moonglow only.

JUX™ SEATING COLLECTION

JUX™ Bar Stool



JX16

18lbs

34"H x 17"D x 18"W

\$442

N/A

N/A

JUX™ Dining Chair



JX11

19lbs

32"H x 23"D x 20"W

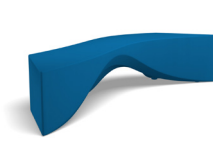
\$448

N/A

N/A

RIPTIDE™ COLLECTION

RIPTIDE™ Bench



 **RT25**

52lbs

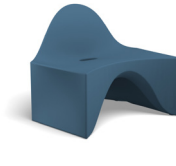
18"H x 28"D x 86"W

\$1,265

+\$440

Anchor Kit +\$220
Ganging Plates +\$120
LUX Color +\$127
USB Port +\$550
*USB Indoor Use Only

RIPTIDE™ Seat



 **RT11**

36lbs

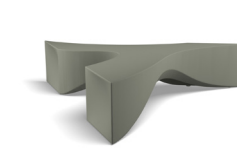
33"H x 34"D x 42"W

\$1,044

+\$440

Anchor Kit +\$220
Ganging Plates +\$120
LUX Color +\$104
USB Port +\$550
*USB Indoor Use Only

RIPTIDE™ Wishbone



 **RT35**

81lbs

18"H x 86"W (Long End)

\$1,998

+\$660

Anchor Kit +\$288
Ganging Kit +\$120
LUX Color +\$200
USB Port +\$550
*USB Indoor Use Only

CORKY® STOOL

CORKY® Stool



 **CK16**

7lbs

18"H x 13"W

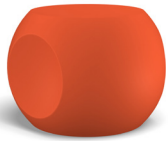
\$249

+\$220

Cork Finish +\$25

DIMPLE™ STOOL & PLANTER

DIMPLE™ Stool & Planter



Model #

DP17

Weight

17lbs

Dimensions

18"H x 24"W

List Price

\$398

Illuminated*

N/A

Options

LUX Color +\$40

Upholstery

OPTIONAL CUSHION COST
A \$110 | B \$145 | C \$180 |
D \$215 | E \$250 |
F \$285 | COM \$75

JIGGER™ STOOL

JIGGER™ 16"



JR16-16

8lbs

16"H x 18"W

See Upholstery

N/A

N/A

A \$465 | B \$535 | C \$605 |
D \$675 | E \$745 | F \$815 |
COM \$395

JIGGER™ 18"



JR16

9lbs

18"H x 18"W

See Upholstery

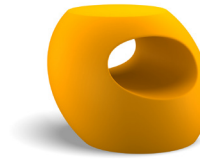
N/A

N/A

A \$575 | B \$675 | C \$775 |
D \$875 | E \$975 | F \$1,075 |
COM \$475

KANGA™ STOOL

KANGA™ Stool



KG16

17lbs

18"H x 22"D x 21"W

\$333

+\$220

N/A

N/A

TUMBLER™ SEATING & SIDE TABLE

TUMBLER™ Square



TR16-18SR

12lbs

18"H x 18"W

\$333

+\$220

Bolt-down +\$220
LUX Color +\$33

N/A

TUMBLER™ Round



TR16-18RD

9lbs

18"H x 18"W

\$333

+\$220

Bolt-down +\$
LUX Color +\$33

N/A

TONIK™

Price List
2020

Tonik | 1800 W. Hawthorne Lane, Suite N | West Chicago, IL 60185 | sales@tonikworld.com | 844.TONIK45 (Toll Free) | tonikworld.com
Specifications subject to change without notice. | 4/20 | ©2020 Tonik | All Rights Reserved.

Item has a Ballast Port

* Illuminated products come in Moonglow only.

TONIKIDS™ COLLECTION

DOTTIE™

SWIZZLE™ COLLECTION

GEMZ™ Small



GM16-SM

GEMZ™ Large



GM16-LG

JIGGER™ 16"



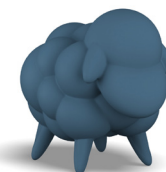
JR16-16

ZOID™



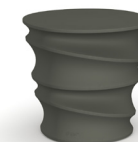
ZD10

DOTTIE™



 **DTM**

SWIZZLE™ Stool



 **SW16**

Model #

Weight

Dimensions

List Price

Illuminated*

Options

Upholstery

7.5lbs

11lbs

8lbs

12lbs

7lbs

10lbs

13"H x 20.5"W

13"H x 26"W

16"H x 18"W

22"H x 43"W

17"H x 20"D x 14"W

17"H x 18"W

\$220

\$276

See Upholstery

\$440

\$249

\$298

N/A

N/A

N/A

N/A

+\$220

+\$220

N/A

N/A

N/A

N/A

N/A

N/A

N/A

N/A

A \$465 | B \$535 | C \$605 |
D \$675 | E \$745 | F \$815 |
COM \$395

N/A


N/A

N/A

TONIK

Price List
2020

Tonik | 1800 W. Hawthorne Lane, Suite N | West Chicago, IL 60185 | sales@tonikworld.com | 844.TONIK45 (Toll Free) | tonikworld.com
Specifications subject to change without notice. | 4/20 | ©2020 Tonik | All Rights Reserved.

 Item has a Ballast Port

* Illuminated products come in Moonglow only.

SWIZZLE™ COLLECTION

SWIZZLE™
Planter 35"



SWIZZLE™
Planter 56"



SWIZZLE™ Pedestal
Floor Lamp



SWIZZLE™ Tripod
Floor Lamp



SWIZZLE™ Plinth
Base Lamp



SWIZZLE™
Surface Light



Model #

 **SW18-35**

 **SW18-56**

SW60

SW60

SW60

SW60

Weight

46lbs

78lbs

43lbs

25lbs

23lbs

15lbs

Dimensions

35"H x 14"D x 25"W

36"H x 23"D x 28"W

76"H x 24"D x 24"W

74"H x 24"D x 24" W

24"H x 24"D x 24"W

16.5"H x 24"W

List Price

\$877

\$1,550

\$1,010

\$1,010

\$850

\$550

Illuminated*

+\$220

+\$220

N/A

N/A

N/A

N/A

Options

Anchor Kit +\$220
Drainage +\$110
LUX Color +\$88

Anchor Kit +\$220
Drainage +\$110
LUX Color +\$155

Anchor Kit +\$220

Anchor Kit +\$220

Anchor Kit +\$220

Anchor Kit +\$220

Cord Colors

N/A

N/A

Chartreuse, Fuchsia,
Malibu, Cloud

Chartreuse, Fuchsia,
Malibu, Cloud

Chartreuse, Fuchsia,
Malibu, Cloud

Chartreuse, Fuchsia,
Malibu, Cloud

Base Colors

N/A

N/A

Metallic Silver,
Satin White

Metallic Silver,
Satin White


Metallic Silver

N/A

TONIK

Price List
2020

Tonik | 1800 W. Hawthorne Lane, Suite N | West Chicago, IL 60185 | sales@tonikworld.com | 844.TONIK45 (Toll Free) | tonikworld.com
Specifications subject to change without notice. | 4/20 | ©2020 Tonik | All Rights Reserved.

 Item has a Ballast Port

* Illuminated products come in Moonglow only.

JUX™ TABLE COLLECTION

PILLOWS

JUX™ Bar Table



 JX41

JUX™ Dining Table



 JX51

PILLOWS



TP1818

TP1222

Model #	JUX™ Bar Table					JUX™ Dining Table					TP1818	TP1222
Shape	Round Molded	Round Phenolic	Square Phenolic	Round Phenolic	Square Phenolic	Round Phenolic	Square Phenolic	Round Molded	Round Phenolic	Square Phenolic	Square	Rectangle
Weight	27lbs	27lbs	27lbs	36lbs	36lbs	39lbs	39lbs	45lbs	45lbs	45lbs	1lb	1lb
Dimensions	39"H x 24"Dia	39"H x 24"Dia	39"H x 24"D x 24"W	39"H x 30"Dia	39"H x 30"D x 30"W	29"H x 36"Dia	29"H x 36"D x 36"W	29"H x 42"Dia	29"H x 42"Dia	29"H x 42"D x 42"W	18"H x 18"W	12"H x 22"W
List Price	\$844	\$880	\$924	\$1,056	\$1,109	\$1,267	\$1,330	\$1,220	\$1,521	\$1,597	See Upholstery	See Upholstery
Illuminated*	+\$220	+\$220	+\$220	+\$220	+\$220	+\$220	+\$220	+\$220	+\$220	+\$220	N/A	N/A
Options	Anchor Kit +\$220	Anchor Kit +\$220	Anchor Kit +\$220	Anchor Kit +\$220	Anchor Kit +\$220	Anchor Kit +\$220	Anchor Kit +\$220	Anchor Kit +\$220	Anchor Kit +\$220	Anchor Kit +\$220	N/A	N/A
Upholstery	N/A	N/A	N/A	N/A	N/A	N/A	N/A	N/A	N/A	N/A	A \$160 B \$235 C \$310 D \$385 E \$460 F \$535 COM \$85	A \$160 B \$235 C \$310 D \$385 E \$460 F \$535 COM \$85

These Terms and Conditions shall be construed, interpreted and enforced under the laws of the State of Illinois, without regard to the conflict of law rules thereof. Venue of any suit brought under these Terms and Conditions, either directly or indirectly, shall be Kane County, Illinois.

Acceptance

Tonik reserves the right to refuse an order, in whole or part, when the type or quantity of goods or credit worthiness of the customer is not satisfactory. Possession of this price list does not constitute a right to purchase Tonik products. Prices, terms and conditions of sale are subject to change. All sales will be made at prices prevailing at the time of order. If shipment is delayed at customer request, prices at time of shipment will prevail. A complete order is defined as having no missing information and issued by a bona fide business or facility with good credit.

Acknowledgements

All orders are manufactured and shipped according to the acknowledgement and its terms and conditions. It is the customer's responsibility to check for and document any discrepancies on the acknowledgement and to notify Tonik immediately in writing.

Cancellation & Charges

Cancellations and change orders are subject to Tonik approval. A cancellation or change order charge will apply if any cost for material or labor has been incurred prior to notification from the customer. A minimum restocking charge of 25% will apply.

Storage & Handling

All orders are acknowledged with an estimated ship date. Failure to accept delivery of an order based on the estimated ship date will subject your order to warehouse storage and handling charges. Tonik will assess storage and handling charges of 1.75% per month or portions thereof on orders that are delayed.

Credit & Payment Terms

Standard payment terms are 50% at time of order and 50% before delivery. Credit privileges are evaluated on a case by case basis, based on credit worthiness of the customer. Past due accounts will be subject to a finance charge of 1.75% per month (prorated at 21% per annum or legal limit) which will be added to the unpaid balance of invoice not paid within 30 days. We accept Visa and MasterCard. Please inquire about leasing options.

Freight

All shipments are F.O.B. West Chicago IL 60185, unless otherwise specified. Standard delivery is on a dock-to-dock basis utilizing a 53' semi-trailer. Unless arranged for in advance and included as part of a formal Tonik price quote, special requests such as "Lift Gate Trucks", "Exact Day Delivery", will incur additional charges of \$250 each. Special requests, such as those listed above must appear on customer's purchase order. Special delivery requests received after the order is acknowledged will be considered a change order. "Exact Time Delivery" is not available. Deliveries required to be received in less than 53' semi-trailers will incur additional charges and must be requested in advance of shipment. Partial shipments at the customer's request will result in additional freight charges. Tonik will not in any event be liable to any customer for special, incidental or consequential damages due to late delivery or non-delivery of goods for any reason.

Freight Damage (Visible)

To receive claims consideration, the consignee must inspect the freight for damage and record the specifics of that damage on the bill of lading or delivery receipt. Under National Motor Freight Classification (NMFC) rules, the consignee does not have the right to open and inspect all of the shipping containers prior to signing for the freight. However, if the condition of the shipping package is such that there is good reason to suspect damage, the consignee has the right and should perform an inspection. It is the responsibility of the receiver of the shipment to inspect for item damage within 15 days of receipt of the shipment and report immediately any discrepancies to Tonik Customer Service. Tonik will not in any event be liable to any customer for special, incidental or consequential damages due to late delivery or non-delivery of goods for any reason.

Freight Damage (Concealed)

When damage is discovered after delivery, it should be reported to Tonik immediately. The freight and shipping container should be retained until a disposition is given. It is the responsibility of the receiver of the shipment to inspect for item damage within 5 business days of receipt of the shipment and report immediately and discrepancies to Tonik customer service.

Freight (Refusal)

Customer is liable for all freight charges when refusing to accept delivery of product under terms of acknowledged shipping schedule.

Freight (Shortages)

The Bill of Lading lists the number of cartons, sleeves or skids you should expect to receive on each shipment. Any discrepancies must be noted on the delivery receipt. A Packing List is included with every shipment. It is the responsibility of the receiver of the shipment to inspect for item shortages within 15 days of receipt of the shipment and report immediately any discrepancies to Tonik customer service.

Returned Goods

Returns will be allowed for unused products in original packaging only after a Return Good Authorization has been requested by the customer and approved by Tonik. Return Goods Authorization requested should be directed to a Tonik Customer Service Representative. Custom manufactured products and/or products stored or handled improperly by the customer are not eligible for return. Customer is responsible for all freight charges associated with the order and a minimum 25% restocking charge. After receiving, inspecting and accepting the returned goods Tonik will issue a product credit to be used by the customer towards future purchases.

Limited Warranty

Tonik warrants, to its original purchaser, all of its products to be free from defects in workmanship and materials for specified periods of time (depending on product) following date of shipment, under normal use and service. Tonik makes no other warranty, express or implied, to its customers or any users of the goods, including without limitation any implied warranty of merchantability of the goods or the fitness of the goods for a particular purpose. Tonik liability shall be limited to repair or replacement of any defect of work or material for products shipped after January 1, 2017 within the specified warranty period, at the sole discretion of Tonik. Tonik shall not be liable for consequential or incidental damage arising from any product defect.

All warranty claims must be submitted in writing to Tonik's Customer Service department, listing the date of purchase, original invoice number and description of defect(s).

The warranty does not cover:

- Normal wear and tear.
- Product failure due to abuse, misuse, negligence, accident, assembly or installation.
- Alteration or modification of the product in any way.
- Natural variations in color, grain or texture.
- Finishes, fabrics, foam and filling materials.
- Customer Owned Material (COM).
- Freight damage.

Limited warranty does not cover shrinkage, picks, wearing, wrinkling, fading, or pilling. This warranty is not valid where there is evidence of heavy soiling or abuse. Because upholstered furniture is made of soft, flexible materials designed for comfort, normal wrinkles and puckers may be present, particularly in the area where the seat intersects with the seat back. Some fabrics may wrinkle slightly within a few months of use, and should not be considered a defect or inferior workmanship.



Tonik's products are presented in this simple, easy to use Price List. Your Tonik Representative will be pleased to assist you in the selection of our products. Tonik Representatives are located throughout the United States and Canada. To be connected with your nearest representative, please call our corporate office, **1-844-TONIK45** or email us at **sales@tonikworld.com**

TONIK[®]

TONIKWORLD.COM

1800 W. Hawthorne Lane, Suite N, West Chicago, IL 60185

844.TONIK45 (Toll Free)